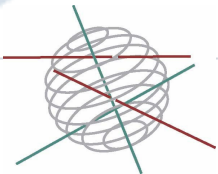


ALIEN IMPACT

1. A project to quantify and explain biodiversity impacts of highly invasive plant species (HIPS)

**Programme
“Science for sustainable development”
(2007-2010)**



Network:

C: Ivan Nijs (UA)

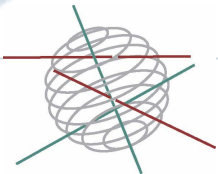
P2: Pierre Meerts (ULB)

P3: Ludwig Triest (VUB)

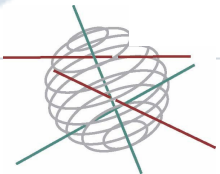
P4: Grégory Mahy (FUSAGx)

P5: Anne-Laure Jacquemart (UCL)

(15 scientists)

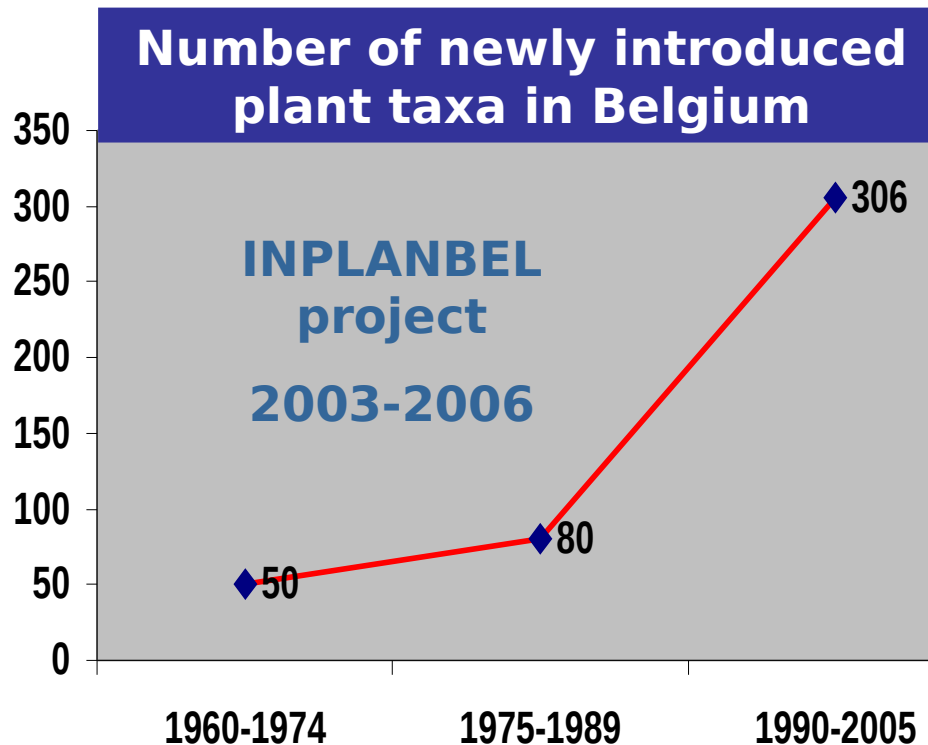


Title: **Biodiversity impacts of highly invasive alien plants: **mechanisms**, enhancing factors and risk assessment**



ALIEN IMPACT

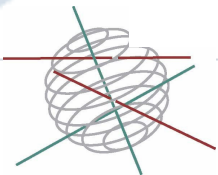
Title: Biodiversity impacts of highly invasive alien plants: mechanisms, enhancing factors and risk assessment



Little quantitative data on impact (both magnitude and type)



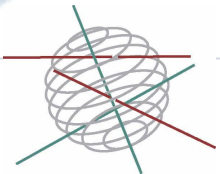
- policy makers
- legislators
- public



ALIEN IMPACT

Questions:

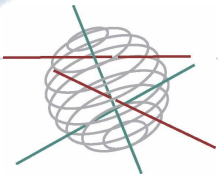
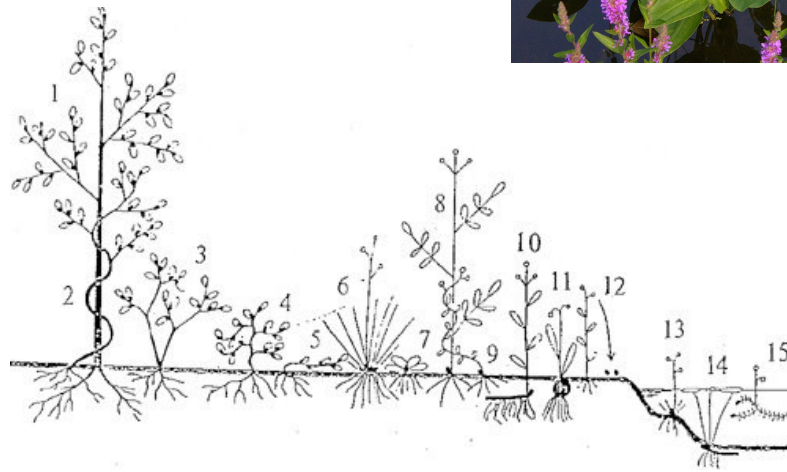
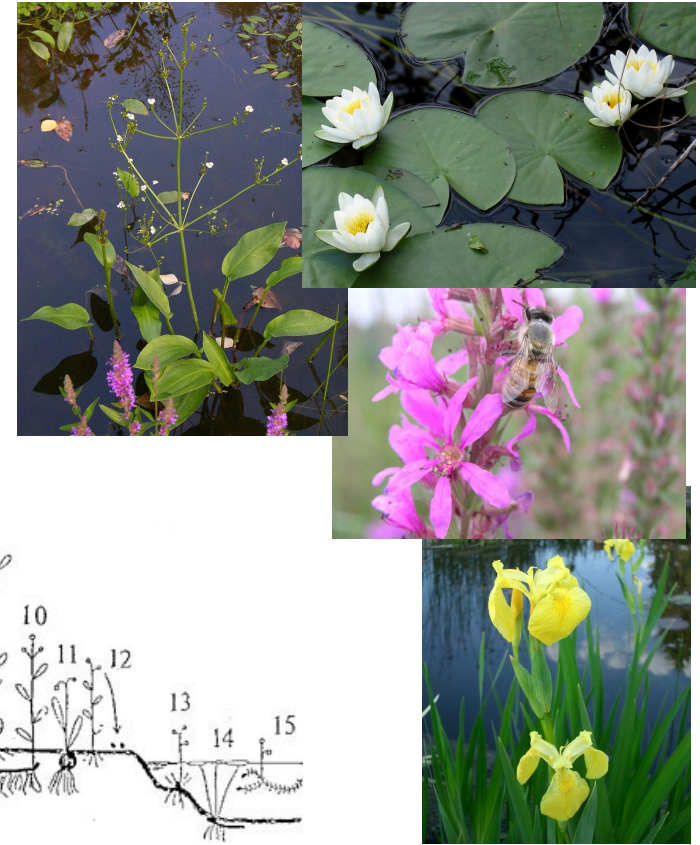
- **Extent** of plant diversity loss in native communities?



ALIEN IMPACT

Questions:

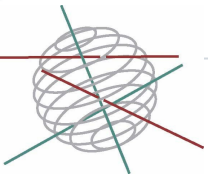
- **Extent** of plant diversity loss in native communities?



ALIEN IMPACT

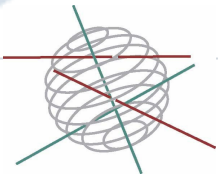
Questions:

- **Extent** of plant diversity loss in native communities?

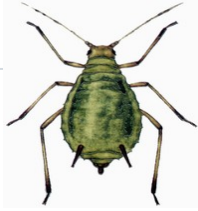


Questions:

- **Extent** of plant diversity loss in native communities?

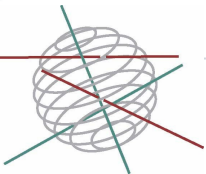
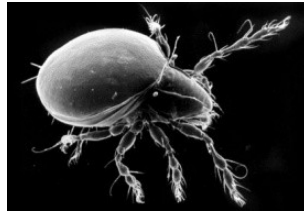


ALIEN IMPACT



Questions:

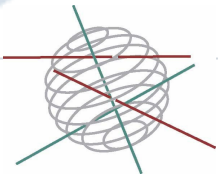
- Extent of plant diversity loss in native communities?
- **Loss of plant diversity → other trophic groups?**



ALIEN IMPACT

Questions:

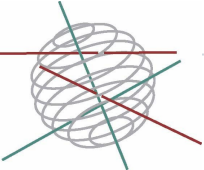
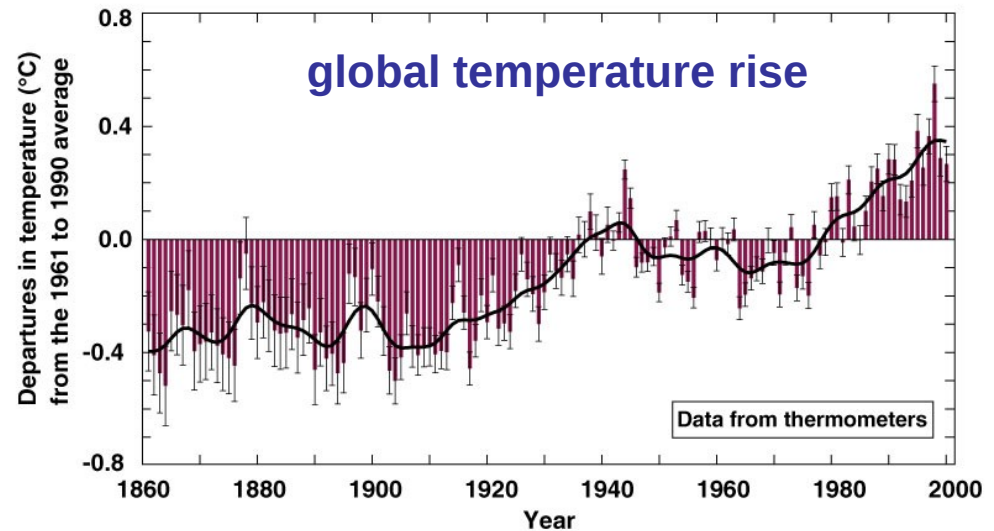
- Extent of plant diversity loss in native communities?
- Loss of plant diversity → other trophic groups?
- Key **pathways** of impact: competition (soil resources and pollinators), allelochemicals? Feedbacks?



ALIEN IMPACT

Questions:

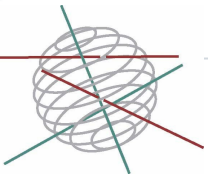
- Extent of plant diversity loss in native communities?
- Loss of plant diversity → other trophic groups?
- Key pathways of impact: competition (soil resources and pollinators), allelochemicals? Feedbacks?
- Impact **modulators**: eutrophication, climate warming?



ALIEN IMPACT

Questions:

- **Extent** of plant diversity loss in native communities?
- Loss of plant diversity → other **trophic** groups?
- Key **pathways** of impact: competition (soil resources and pollinators), allelochemicals? Feedbacks?
- Impact **modulators**: eutrophication, climate warming?



ALIEN IMPACT

Questions:

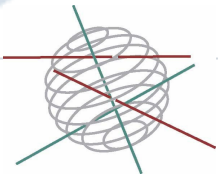
- **Extent** of plant diversity loss in native communities?
- Loss of plant diversity → other **trophic** groups?
- Key **pathways** of impact: competition (soil resources and pollinators), allelochemicals? Feedbacks?
- Impact **modulators**: eutrophication, climate warming?

Methods:

Large-scale field surveys ↔ Controlled environments



Integration: shared species, sites, and protocols, and mirror experiments for terrestrial and aquatic



ALIEN IMPACT

Expected outcomes:

ecosystem management
and restoration

patterns of impact
across scales

identify sensitive
native species

protective
measures

carry-over
effects on soil

identify native
communities most
at risk

nature managers:
prioritisation of habitats

effects of climate
change on impact

policy makers:
future evolution of
invasion

monitoring
networks

probability
of succesful
restoration

terrestrial vs.
aquatic impact

policy makers:
setting priorities

